

ECOMMUNITY PLACE LOCATEE LANDS (EPLL) FLOODPLAIN RE-ENGAGEMENT FACT SHEET

PROJECT TEAM:

- En'owkin Center
- Penticton Indian Band
- Okanagan Nation Alliance

ONA CONTACT:

Kari Alex, Fisheries Biologist
Email: kalex@syilx.org
Phone: 250-707-0095 ext. 301

KEY MESSAGES:

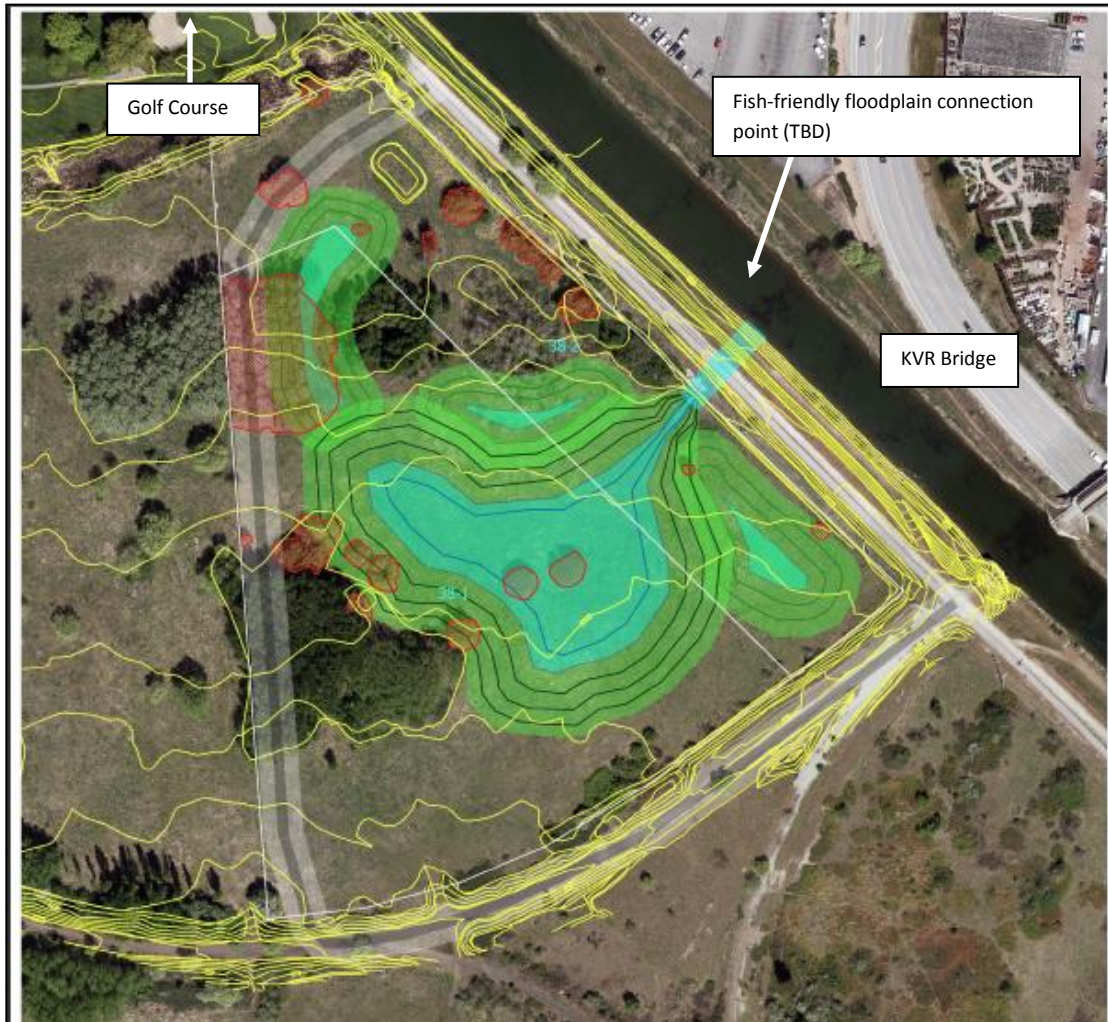
- Okanagan River channelization resulted in 50 % loss of length, 93 % loss of riparian habitat, and isolation from floodplains.
- The EPLL site is the only remaining portion of floodplain in Penticton (Penticton) area restorable without major infrastructure changes.

PROJECT OBJECTIVE:

- Protect and enhance the EPLL Floodplain in perpetuity, under Syilx stewardship, and to:
 - Re-connect Penticton Channel to the floodplain, to allow for backwater flooding as per the natural hydrological cycle (no flow, just water rising and falling in the floodplain with river levels).
 - Provide seasonal rearing habitat for native fish, especially sk'lwist/ntitiyx (Chinook salmon).
 - Provide a range of fish-free wetlands for other species, such as frogs, salamanders, and turtles.
 - Retain and enhance grassland habitat for dryland species.



CONCEPTUAL DESIGN FOR THE EPLL FLOODPLAIN RE-ENGAGEMENT



Green: shoreline (3:1 or shallower slope)

Blue: wetted area

- All ponds ephemeral (wet March - October, dry over winter)
- Chinook pond
 - o > 200 m2 area
 - o 20 – 120 cm deep
 - o Logs and boulders
 - o Overhanging vegetation
 - o Silt and gravel bottom
- Amphibian ponds
 - o 30 – 100 cm deep
 - o Fish-free

Grey: “dike”/maintenance road

Red: introduced invasive vegetation to prioritize for impacted areas and/or removal

Black lines: pond contour lines representing 3 to 5 m wide by 1 m deep

Yellow lines: topographic elevation lines

Non-shaded areas: areas left as dryland

**** Note:** actual pond and river/floodplain connection placement and shape may vary.